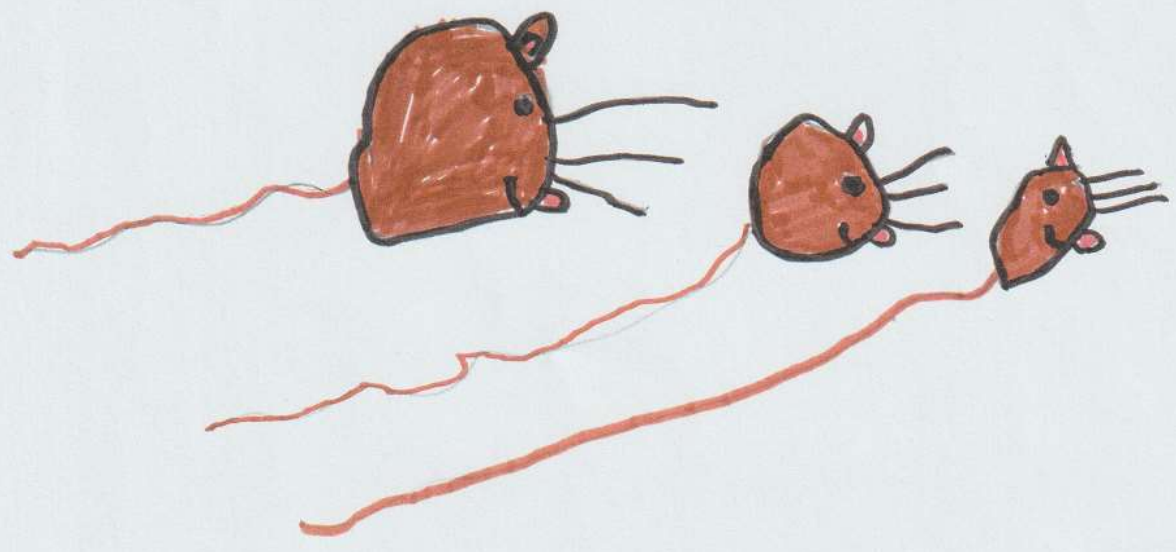


The Big Bad

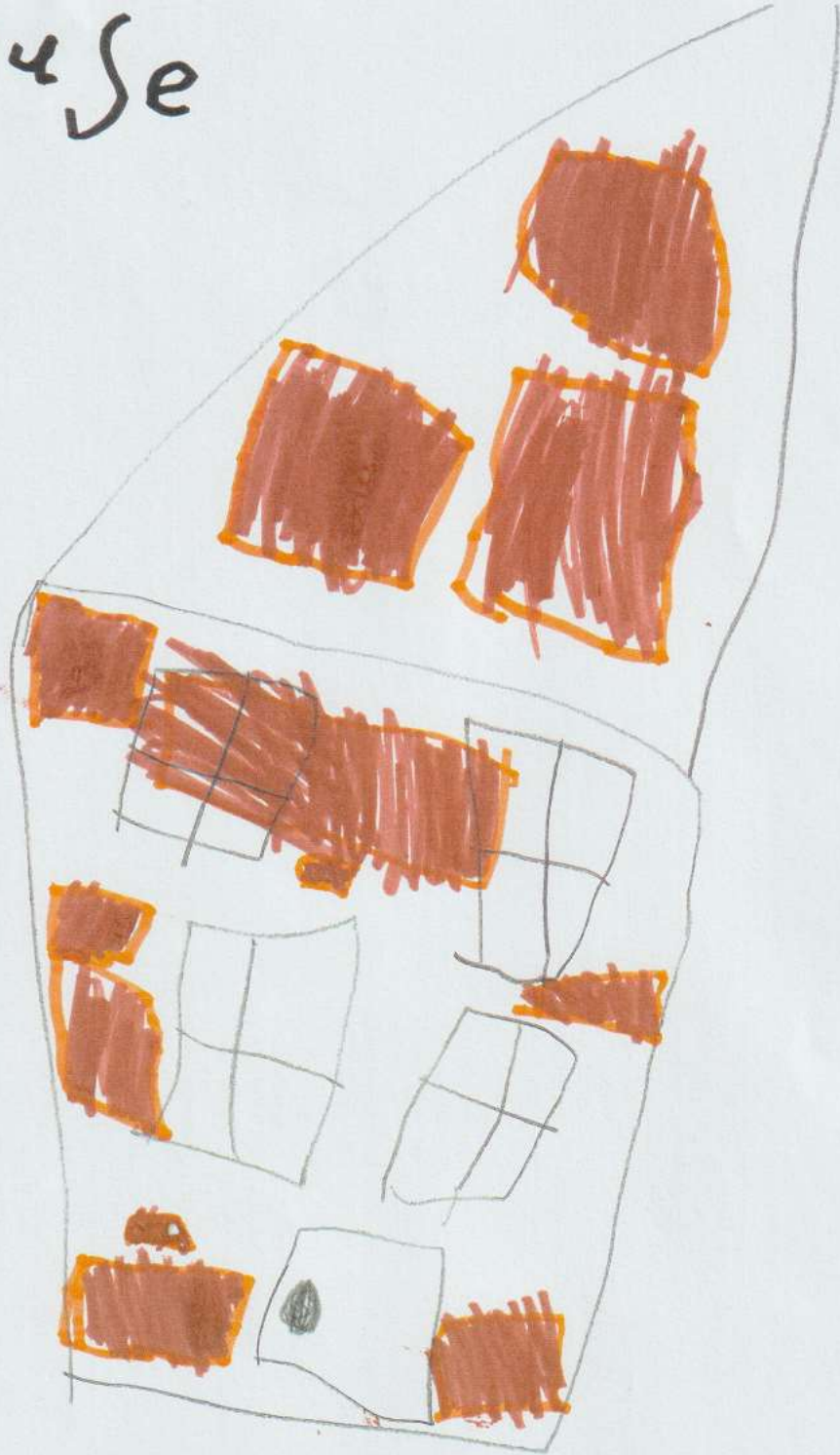
Cat



walks upon a
tightrope & literal might
but 3 howe's



A house

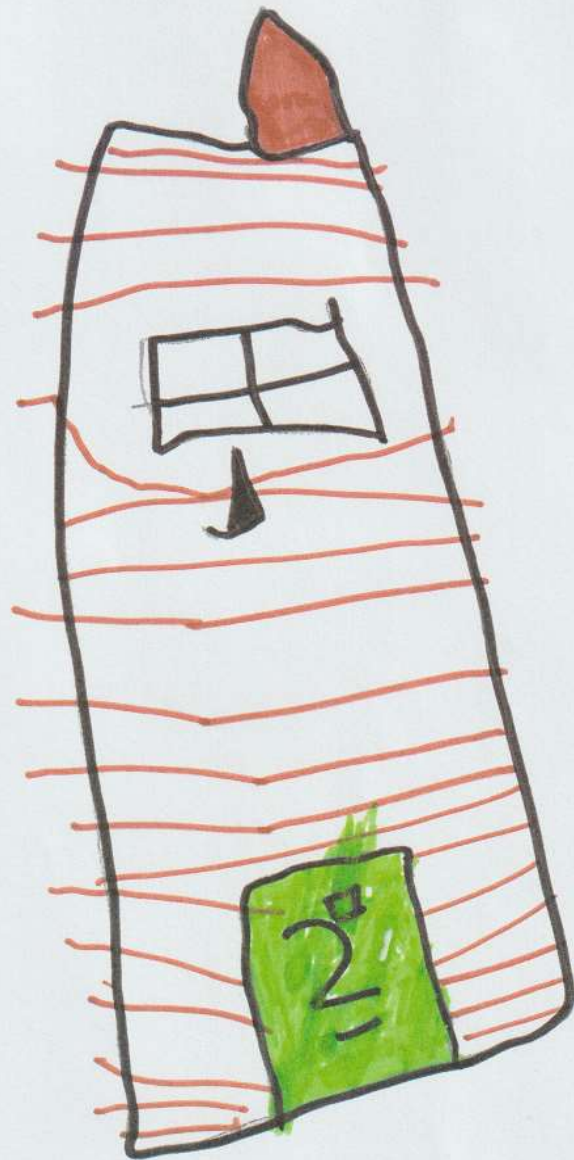


Made of

BRICKS.

andws m adof

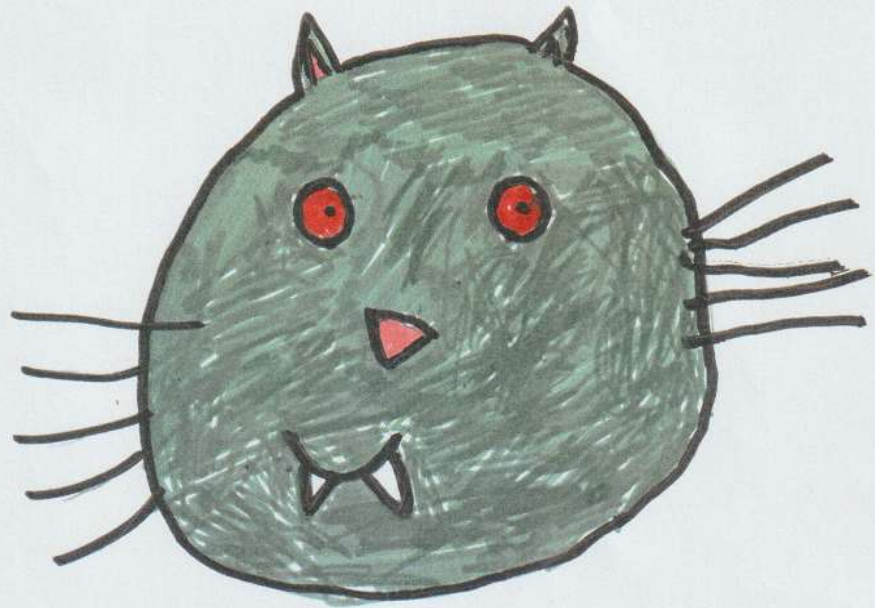
Sticker S



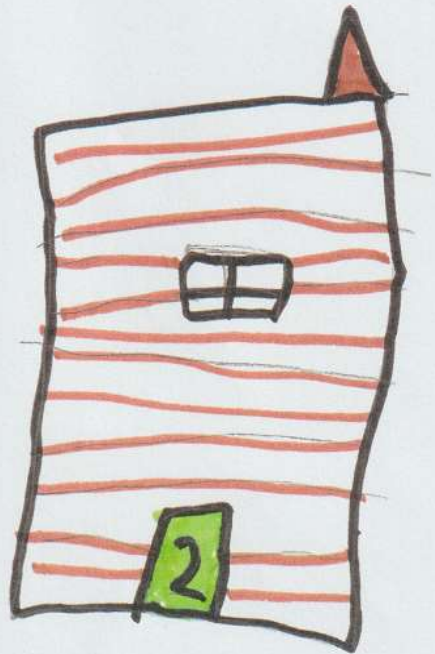
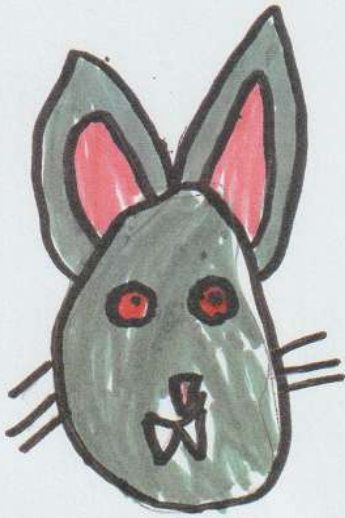
could a hollow
mailed
straw



W o n d e r T h e P L G
B a d c a t c o m m '



The Big Babcat went
to the sticker nows

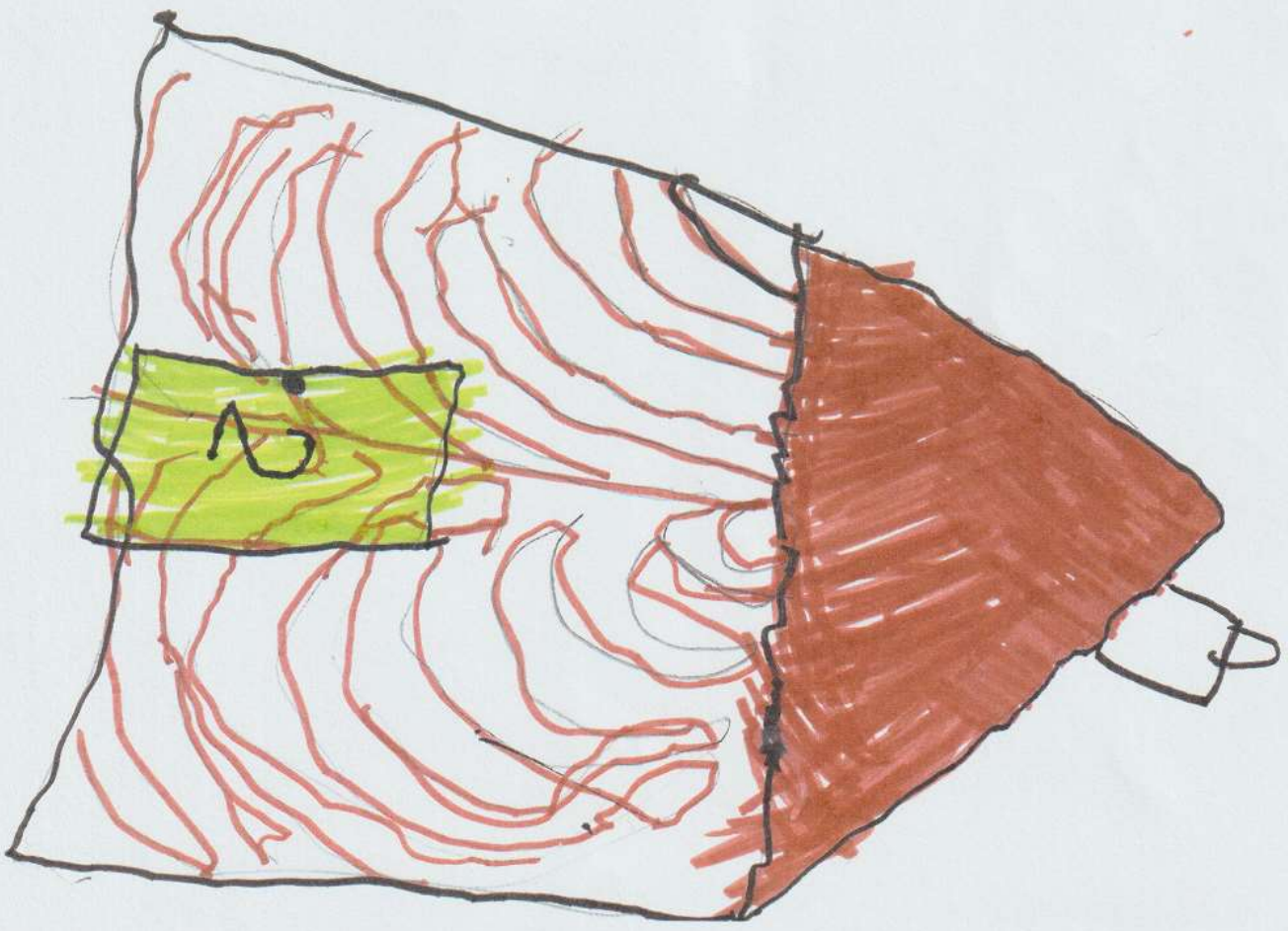




I will tap
and scratch
and push you
how's down



The cat pushed the
haws of STIX
down.



t h Q n + h E

Q t went to the

st p a + h o w s



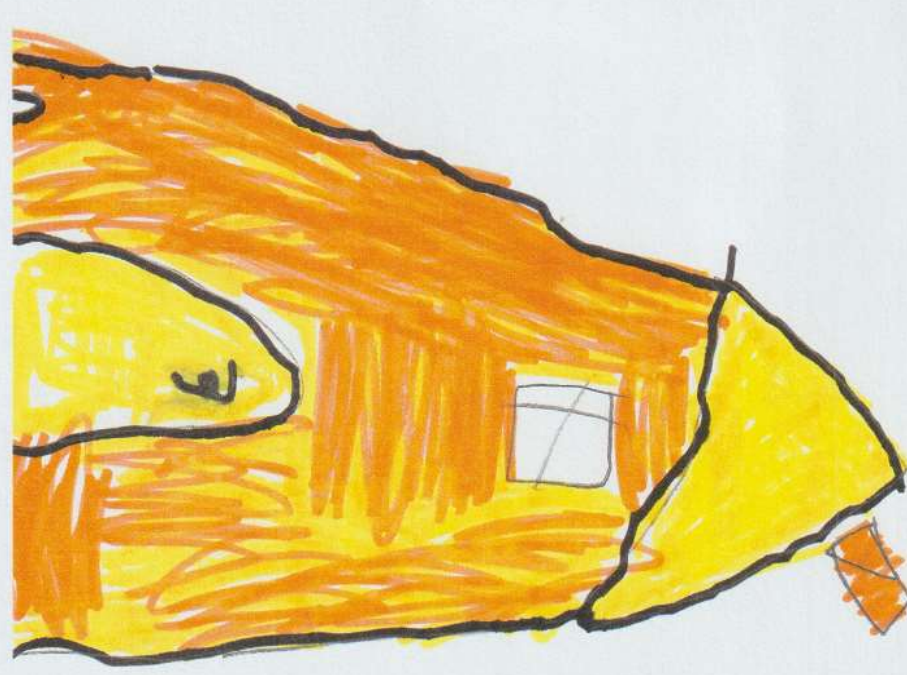
i



I will tap
and scratch
and push you
how's down



The big bad Cat
now's out thru DOWN. Puts the



The 2 people
went
now to the



of
brick



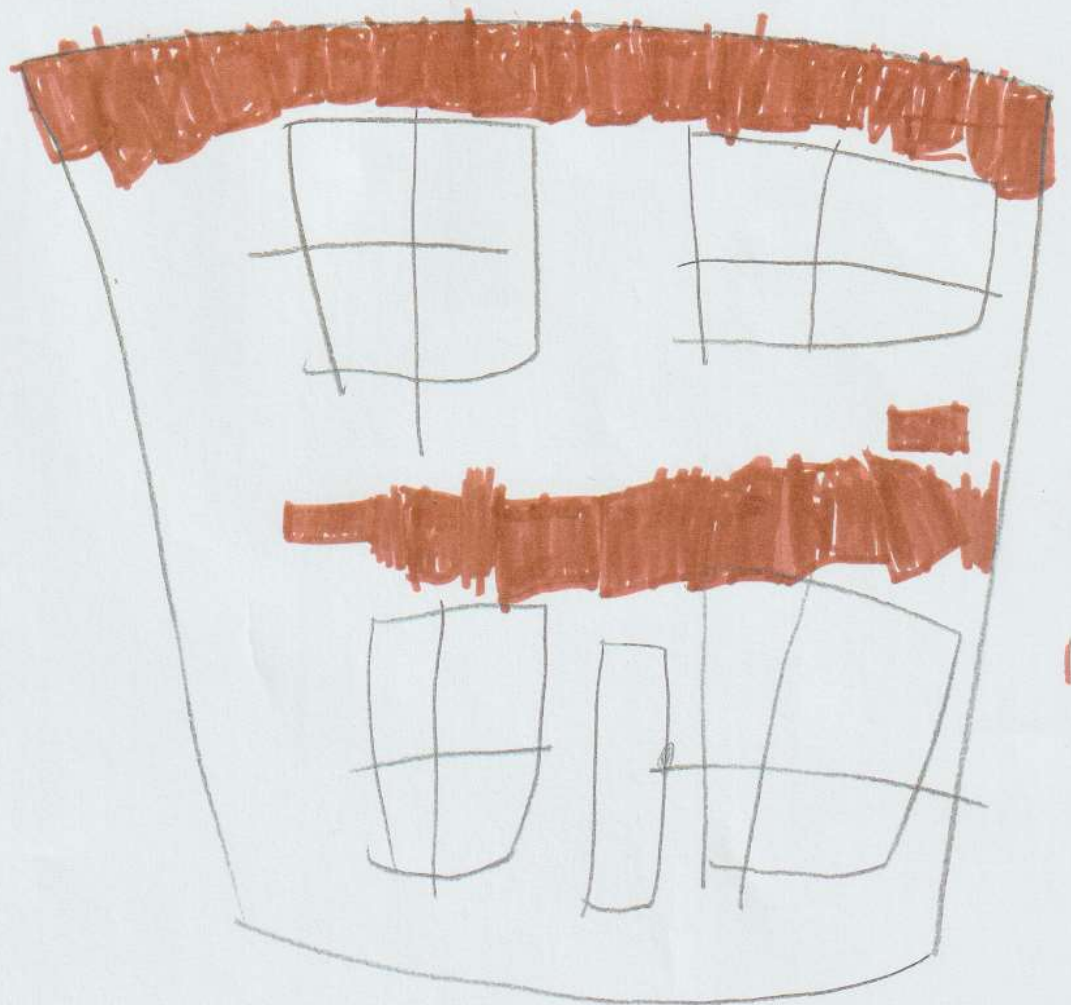


I will tap
and scratch
and push you
how's down





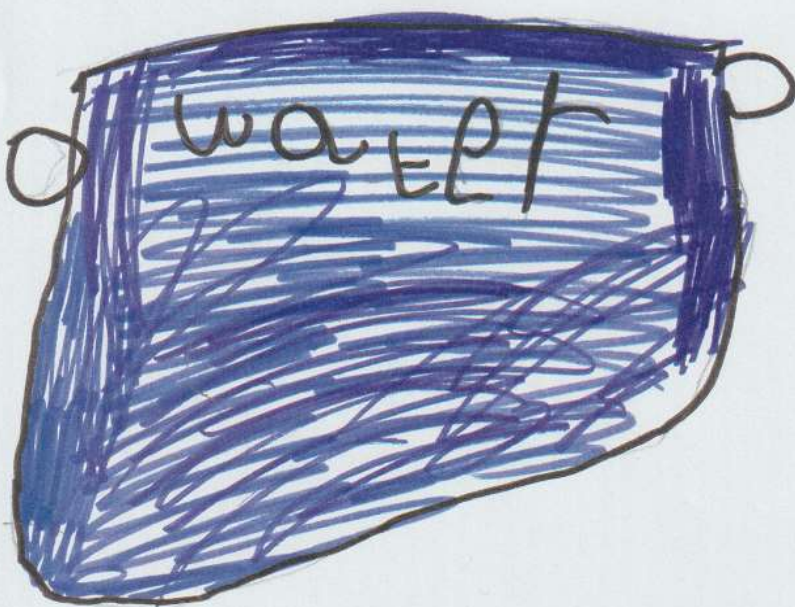
The cat cud not push
the has oz brick
down.



The cat climbed
up the chimney.



The cat fell in the
water.



3 Little

MISLIVED
happy ever
after.

